



Cdc25C (phospho Thr48) Polyclonal Antibody

Catalog No	YP-Ab-16617
Isotype	IgG
Reactivity	Human;Rat;Mouse;
Applications	WB;IHC;IF;ELISA
Gene Name	CDC25C
Protein Name	M-phase inducer phosphatase 3
Immunogen	The antiserum was produced against synthesized peptide derived from human CDC25C around the phosphorylation site of Thr48. AA range:14-63
Specificity	Phospho-Cdc25C (T48) Polyclonal Antibody detects endogenous levels of Cdc25C protein only when phosphorylated at T48.
Formulation	Liquid in PBS containing 50% glycerol, 0.5% BSA and 0.02% sodium azide.
Source	Polyclonal, Rabbit,IgG
Purification	The antibody was affinity-purified from rabbit antiserum by affinity-chromatography using epitope-specific immunogen.
Dilution	WB: 1/500 - 1/2000. IHC: 1/100 - 1/300. ELISA: 1/5000.. IF 1:50-200
Concentration	1 mg/ml
Purity	≥90%
Storage Stability	-20°C/1 year
Synonyms	CDC25C; M-phase inducer phosphatase 3; Dual specificity phosphatase Cdc25C
Observed Band	80kD
Cell Pathway	Nucleus .
Tissue Specificity	Colon carcinoma,Epithelium,Skin,Testis,
Function	catalytic activity:Protein tyrosine phosphate + H(2)O = protein tyrosine + phosphate.,developmental stage:Expressed predominantly in G2 phase.,function:Functions as a dosage-dependent inducer in mitotic control. It is a tyrosine protein phosphatase required for progression of the cell cycle. It directly dephosphorylates CDC2 and activate its kinase activity.,PTM:Phosphorylated by CHK1 on Ser-216. This phosphorylation creates a binding site for 14-3-3 protein and inhibits the phosphatase.,similarity:Belongs to the MPI phosphatase family.,similarity:Contains 1 rhodanese domain.,subunit:Interacts with HIV-1 Vpr, thereby inactivating CDC25C phosphatase activity.,
Background	cell division cycle 25C(CDC25C) Homo sapiens This gene encodes a conserved protein that plays a key role in the regulation of cell division. The encoded protein directs dephosphorylation of cyclin B-bound CDC2 and triggers entry into mitosis. It also suppresses p53-induced growth arrest. Multiple alternatively spliced transcript variants of this gene have been described.



[provided by RefSeq, Dec 2015],

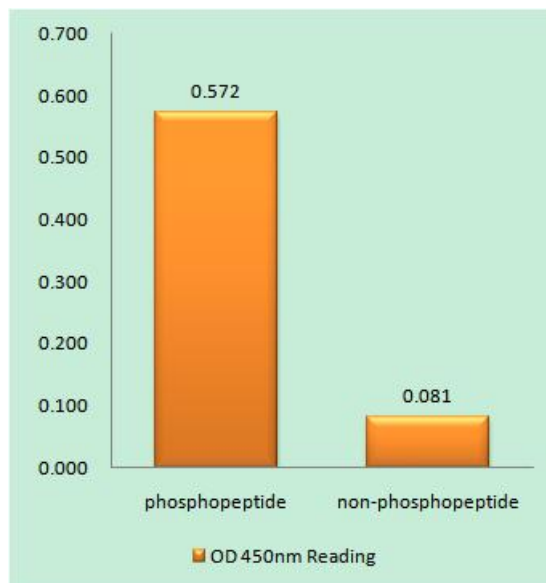
matters needing attention

Avoid repeated freezing and thawing!

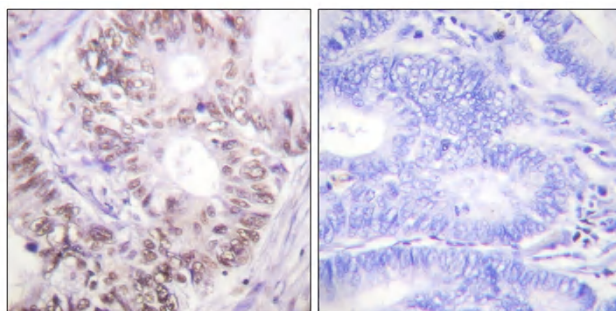
Usage suggestions

This product can be used in immunological reaction related experiments. For more information, please consult technical personnel.

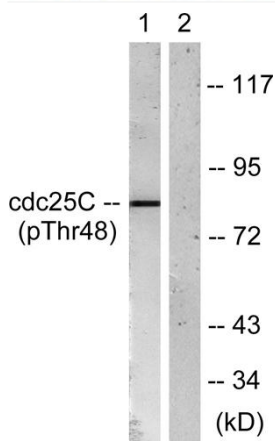
Products Images



Enzyme-Linked Immunosorbent Assay (Phospho-ELISA) for Immunogen Phosphopeptide (Phospho-left) and Non-Phosphopeptide (Phospho-right), using CDC25C (Phospho-Thr48) Antibody



Immunohistochemistry analysis of paraffin-embedded human colon carcinoma, using CDC25C (Phospho-Thr48) Antibody. The picture on the right is blocked with the phospho peptide.



Western blot analysis of lysates from RAW264.7 cells, using CDC25C (Phospho-Thr48) Antibody. The lane on the right is blocked with the phospho peptide.